

Peace of mind for seniors & families



Mobile Personal Emergency Response Anywhere. Anytime.

Wearable pendant with a one-click connection to care when it's needed, both inside and outside of the home.

- ✓ Wireless
- ✓ GPS enabled
- ✓ Canada-wide



Wearable Pendant

Introducing Caretrak.

Caretrak Mobile Response enables independence with a direct connection to your care contact or the 24/7 emergency response centre **where and when** it's needed. Your safety is enhanced with two-way communication directly from the pendant and automatic location tracking Canada-wide.

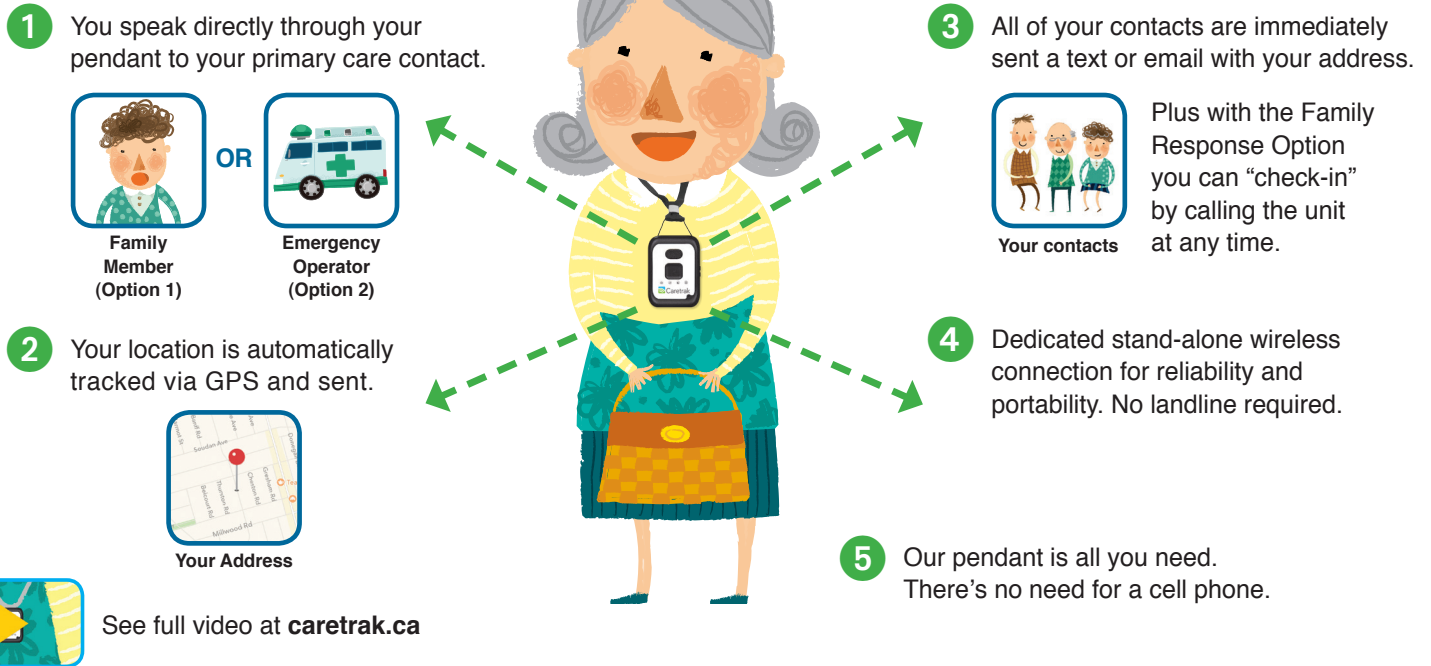
With one push of the SOS button, you **speak directly to your care contact**, your **address is automatically tracked via GPS** and **text/email alerts** are sent to all of your contacts.

For more information visit
caretrak.ca or call **1-855-333-3381**



How it works

Instantly...when your SOS button is pushed



Choose your response option

OPTION 1

Family Response Plan

40 calling minutes/month

Device cost

Monthly

\$44/month

ONE-TIME \$79

One-year

\$528

Free

OPTION 2

Emergency Response Plan

24/7 certified monitoring centre

Device cost

Monthly

\$54/month

ONE-TIME \$79

One-year

\$648

Free

Both plans include 24/7 wireless, GPS services and text/email alerts and come with neck lanyard, drop-in charging cradle and carrying pouch. You can upgrade from Family Response Plan to Emergency Response Plan at any time.

Simple to get started

- ✓ Low-risk 15 day trial period
- ✓ Free shipping - ready to use
- ✓ No installation or land line required
- ✓ Canada-wide usage
- ✓ No long-term contract (6 months minimum)
- ✓ Reliable national network

Call 1-855-333-3381 to order!

Visit Caretrak.ca or email info@caretrak.ca

It is important to use both two-way voice communication and GPS location service to assess the situation and confirm location. Always verify location during the call. If the GPS signal is low at the time of an SOS event, the last reported location with a good GPS signal will be provided. The Mobile Defender solution provides updated location information to its servers every 15 minutes. As with all GPS location services, it may not always be possible to determine and provide your current location. Multi-level buildings, parking garages, obstructions and dense urban areas can make it difficult for satellites to determine your exact location. Functionality of the unit is subject to wireless coverage and proper charging. One-time activation fee of \$30 applies. Estimated battery life: Up to 48 hours of continuous use. Regular daily charging of 3 hours is recommended.

This is not intended to replace regular contact with caregivers or access to an alternative means of placing a call.

Certified by Industry Canada and meets applicable technical standards.

