

Choose Your Response Option

SAVE \$50 PLUS 10% LIFETIME DISCOUNT

FAMILY RESPONSE Connect to a family member 40 Calling minutes/month	Monthly	One-year
	\$44 \$39.60	\$528 \$425.20 (=\$35.43/month)
Standard		
OR		
Fall Detection	\$54 \$48.60	\$648 \$533.20 (=\$44.43/month)
One-time Device Cost	\$49 Free	Free

EMERGENCY RESPONSE 24/7 Certified Monitoring Centre	Monthly	One-year
	\$54 \$48.60	\$648 \$533.20 (=\$44.43/month)
Standard		
OR		
Fall Detection HIGH VALUE-REDUCED RATE	\$64 \$48.60	\$768 \$533.20 (=\$44.43/month)
One-time Device Cost	\$49 Free	Free

Includes Caregiver Mobile app with real-time location tracking and text/email alerts for family (optional use). USA Travel Service available on all plans.

Low risk 15-day trial period.
Free shipping in Canada.

Call 1-855-333-3381 to order!
Visit Caretrak.ca or email info@caretrak.ca

10% CARE Discount
Use coupon code "CARE"

Jane's story



Jane lives on her own and her husband recently passed away. She has diabetes and arthritis in her knees and is susceptible to falls, but she likes her independence and wants to live at home. Her daughter decided to buy the Caretrak system. Both Jane and her family feel safe that whenever she feel unsure or needs assistance anytime, she can easily push the help button. The system immediately connects a two-way call to her daughter and sends text/email alerts to her other two sons.

For more information contact:



Caretrak
1.855.333.3381
info@caretrak.ca
caretrak.ca



It is important to use both two-way voice communication and location services to assess the situation and confirm location. Always verify location during the call. As with all GPS location services, it may not always be possible to determine and provide your current location. Multi-level buildings, parking garages, obstructions and dense urban areas can make it difficult for satellites to determine your exact location. Functionality of the unit is subject to wireless coverage and proper charging. One-time activation fee of \$30 applies. Estimated battery life: Up to 48 hours of continuous use. Regular daily charging of 2 hours is recommended. Offer valid until June 30, 2022.

This is not intended to replace regular contact with caregivers or access to an alternative means of placing a call.

Certified by Industry Canada and meets applicable technical standards.

Medical Alert System with GPS

24/7 Response Anywhere, Anytime.

Peace of mind
for seniors
and families



Wearable pendant



- ✓ Wireless
- ✓ GPS enabled
- ✓ Canada-wide
- ✓ USA Travel

Check out our "How it Works"
video at caretrak.ca or call
1.855.333.3381



Caretrak

Mobile personal emergency response.



24/7 Response Anytime, Anywhere.

The good news is that Canadians are living longer and are healthier than before. Seniors are living independently in their own homes and enjoying more active lives outside of the home. Most of the time, all is well but every once in a while... something happens. Daughters, sons and care providers are often concerned about their safety while going about their own tasks of daily living. How can everyone feel more safe and secure?

The Caretrak solution is the evolution of personal response units that only work in the home. It works beyond home boundaries from the garden to the shopping mall, Canada-wide. Services are also available when traveling to the USA.

There is a built-in two-way speakerphone so users speak directly through the pendant to tell their care contact what's happening and what help is needed.

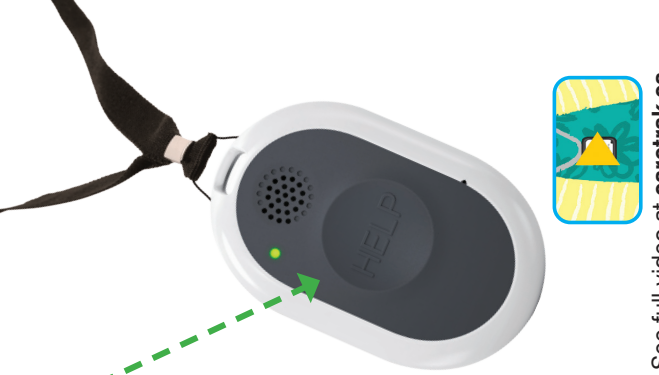
Unique to Caretrak...the choice of two response options – Family Response or 24/7 Emergency Response.

The Family Response option is tailored to meet the needs of families looking out for loved-ones. The unit is programmed to call your care contact of choice. It can be used for less urgent concerns such as a minor injury or being lost – situations where emergency 911 assistance isn't immediately required. Your care contact can also make check-in calls to the unit.

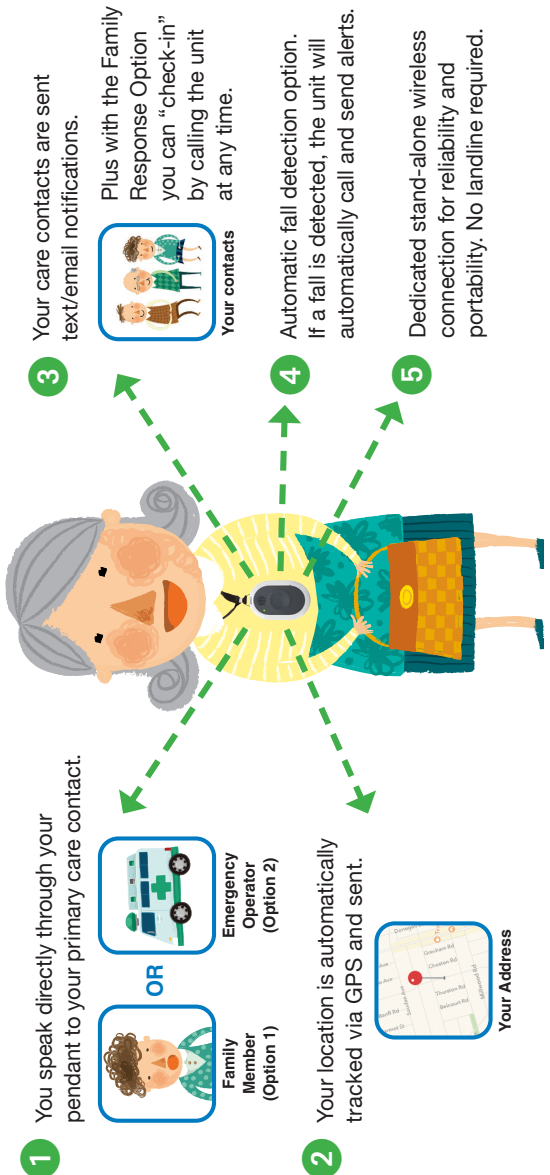
It's simple

More good news, there is **no installation or landline required**. The unit is shipped to your door ready to use and has a **15-day low risk trial period**.

- ✓ Works both inside and outside of the home. No boundaries.
- ✓ Speak directly through the pendant to know what's happening.
- ✓ Portable – take with you anywhere across Canada. USA travel service available.
- ✓ Your care contact can check-in with the user anytime (Family Response). It has its own phone number.
- ✓ Choose between Family or Emergency Response. Change service if your situation changes.
- ✓ Automatic Fall Detection.
- ✓ Get real-time location updates and alerts for HELP calls and low battery using the Caregiver Mobile app (optional).



How it works: Instantly...when your HELP button is pushed



Our pendant is all you need. There's no need for a cell phone.

See full video at caretrak.ca

Check out our "How it Works" video at caretrak.ca or call 1.855.333.3381